



Specifications

MFX-1930OB/1330OB

Printing Method :	LED
Scanning Method :	Mono and colour CCD
Print Speed :	19 ppm / 13ppm
User Interface :	2-line LCD
Automatic Document Feeder :	80 sheets
Platen Glass :	Yes
Paper Capacity :	550 sheets (includes 50 sheets bypass tray)
Maximum Paper Capacity :	1,050 sheets
Duplex Printing :	Yes
Quad Access :	Yes
Ethernet :	Standard 10/100 BaseT, RJ-45 connection
Network Protocol :	TCP/IP
DHCP Compliant :	Yes
Local Connection :	USB 2.0
Easy Change Consumables :	Yes, front loading
Dimensions :	520mm (W) x 450mm (D) x 446mm (H)
Power :	220-240 VAC, 50/60Hz
Weight :	21.2kg

Model	MFX-1930OB/1330OB	MFX-1930D/1330D
Copier	Yes	Yes
33.6K Fax	Yes	Yes
Network PC Fax	Yes	Option
Internet Fax	Yes	Option
LDAP	Yes	Option
TWAIN Scanning	Yes	Yes
Scan to Folder	Yes	Option
Scan to E-mail	Yes	Option
Scan to FTP	Yes	Option
Local GDI Print	Yes	Yes
Network Print	Yes	Option
PCL Print	Option	Option

Features

MFX-1930OB/1330OB & MFX-1930D/1330D

Copier Features:

Copy Speed	19 cpm / 13 cpm
First Copy Out Time (FCOT)	10 seconds / 12 seconds
Warm Up Time	23 seconds
Copy Quantity	1-99
Reduction/Enlargement	25-400% (FBS) / 25-100% (ADF)
Maximum Resolution	600 x 600dpi
Default Scan Speed	2.9 seconds
Image Combination	2 in 1
Electronic Sorting	Standard
Output Tray	250 sheets
Cover Page Insertion	Yes

Scanner Features:

TWAIN Scanning	Standard
Scanner Resolution	Colour: 100dpi-600dpi Mono: 200dpi-600dpi [MFX-1930D/1330D: 200dpi-600dpi (Colour/Mono)]
Greyscale	256 levels
Interface	USB 2.0 and ethernet standard [MFX-1930D/1330D: ethernet Optional]
Scan to Folder*	Standard (Colour/Mono) Folder Shortcut: 20
Scan to E-mail*	Standard (Colour/Mono)
Scan to FTP*	Standard (Colour/Mono) FTP Shortcut: 20
File Formats	PDF, TIFF, JPEG
Default Colour Scan Speed	TWAIN: 13.5 seconds*1 Scan to Folder/Email/FTP: 8.0 seconds*2
Default Mono Scan Speed	TWAIN: 4.3 seconds*1 Scan to Folder/Email/FTP: 4.3 seconds*2
E-mail/Folder Broadcast*	Yes

Printer Features:

Print Resolution	600 x 600dpi
Emulation	GDI (PCL optional)
Interface	USB 2.0 and ethernet standard [MFX-1930D/1330D: ethernet Optional]
Operating Systems	Windows 98SE, ME, NT4, 2000, XP and 2003
Duplex Print Speed	5ppm
Job Cancel	Machine/Browser

Fax Features:

Modem Speed	33.6Kbps
Data Compression	MH, MR, MMR, JBIG
Transmission Speed	2 seconds*3
Scan Speed	1.9 seconds*4
Desktop Faxing*	Standard
Internet fax	Standard (T.37)
Memory	8MB (approx. 650 A4 pages)*4
Optional Memory	32MB (total 40MB, approx. 3,370 A4 pages)*4
Memory Backup Maximum	72 hours
Address Book	1,000 locations (expandable to 2,000) [MFX-1930D/1330D: 200 locations]
Broadcasting	230 locations (Direct dial : 30)
Group Dialling	100 groups (expandable to 200) [MFX-1930D/1330D: 32 groups]
LDAP Directory Support*	Active Directory 2000 & 2003, OpenLDAP
Fax History	10, 20 or all
Block Junk Fax	Yes, 50 locations
Secure Copy & Fax	Yes
Confirmation Report	Yes

Consumables & Options:

High Yield Toner Set	16,000 @ 6%
High Yield Drum Kit	30,000 2 page cycle
Paper Tray	500 Sheet Paper Cassette
Additional Memory	32MB Memory Card
Network Interface Card	Option (NP-400) [MFX-1930D/1330D only]
PCL Printer Interface	Option (OP-500)
Handset	Option
2nd Fax Line	Option
Copy Desk	Option
Mechanical Counter	Option
OfficeBridge	Option (OB-400) [MFX-1930D/1330D only]

* MFX-1930D/1330D optional
*1 ADF, A4, 200dpi
*2 ADF, A4, 100dpi
*3 Based on memory transmission of ITU-T Test Document 1
*4 Based on ITU-T Test Document 1 stored at normal resolution

Muratec reserve the right to change design, features and specification details without prior notice. Windows 98SE, NT, 2000, ME, XP and 2003 are registered trademarks of the Microsoft Corporation. E&OE



- Please read the instruction manual carefully before using the machine.
- DO NOT use the machine in wet, humid, dusty, and/or smoky environment. Such environment may cause fire, malfunction and/or electric shock.

MURATEC EUROPE GmbH

Hanns-Martin-Schleyer-Strasse 3, D-47877 Willich, GERMANY

MURATEC UK Ltd.

343 Edinburgh Avenue, Slough, Berkshire SL1 4UA, UK

www.muratec-europe.de



MFX-1930 MFX-1330

Desktop Copier, Printer, Colour Scanner and Fax
with low total cost of ownership

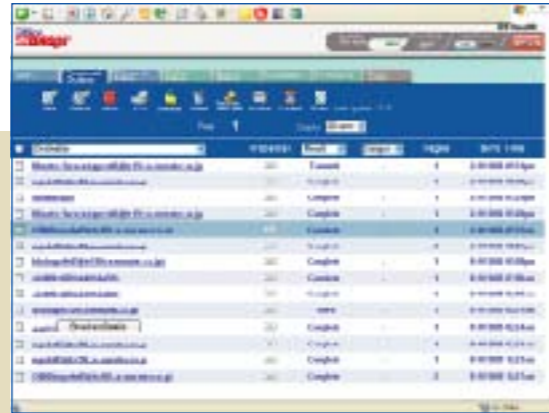




MFX-1930OB and MFX-1330OB

All-in-one solution with low operation cost.

The MFX-1930 and 1330 series have passed the rigours of the toughest buyers. Its' compelling total cost of ownership and long term durability make us the envy of our competitors. Outstanding performance, with PC printing, copying, faxing, colour scanning and duplex printing as standard, the MFX-1930 and 1330 series offer a low cost, long term solution for busy offices and departments.



OfficeBridge Plus functionality (Standard on OB model)

The OfficeBridge Plus low cost digital connectivity solution expands the capabilities of the MFX-1930D and 1330D as follows:

- Network scanning
- Desktop faxing
- Network printing
- Scan to E-mail
- Internet faxing (T.37)
- Workflow management

OfficeBridge Plus adds powerful features such as inbound fax routing and programming of autodial numbers directly from the PC using the intuitive, browser-based interface.



UI Project MURATEC's Usability Improvement (UI) Project makes it easy for users to operate our products.

Colour Solution

Colour Scan to folder

Simply scan to a specific personal or shared folder on a network. Scan files at a selectable resolution, controlling image clarity and original file size.



Colour Scan to e-mail

You can send important documents to a remote e-mail address as TIFF, PDF or JPEG* files directly from the MFP. E-mail addresses may be stored into one-touch keys for instant recall and transmission.

*JPEG file format is for colour scanning only



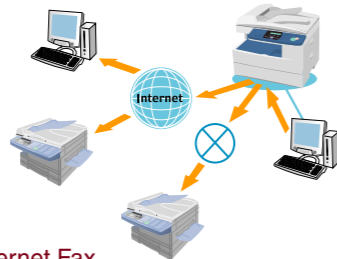
Colour Scan to FTP

Whether you need to upload high-resolution colour or black and white original documents, files that are too large to be sent via a traditional e-mail server can be scanned to a password-protected FTP site for download or storage.

Network Solution

Desktop faxing

Quickly and easily send documents from popular software applications to remote fax machines. Your interactive address book allows for effortless transmission to multiple recipients.



Internet Fax

Send documents from the MFX-1930OB and 1330OB to a remote Internet fax unit. T.37 offers both cost and security benefits when compared to T.38. (T.37 does not require a VPN or the compromising of network integrity)



LDAP search capabilities

LDAP directory support allows you to search corporate directory servers for contact information from "OfficeBridge Plus" web browser interface.

Printer & Scanner

Standard GDI-based printing

GDI printing system produces crisp, clear prints at 600dpi.



Optional PCL printer

GDI printer can be upgraded to a PCL printer allowing compatibility with corporate and legacy applications.

Standard colour scanning

High-resolution colour scanner offers easy digital transfer of hardcopy photos, charts and various office documents. TWAIN compliance scans images into popular software applications.



General Features

Refined print engine

- Printing speed at 19* pages per minute, the 600dpi PC printing comes as standard - ideal for organizations, departments or individuals which require high quality output and fast print speeds.

*MFX-1330; 13pages per minute

Flexible paper capacity

- Standard 500-sheet paper capacity easily expands to 1,000 sheets with optional 2nd cassette.

Multipurpose bypass tray

- A 50-sheet bypass tray enables you to copy onto OHP film, letterheads or envelopes whilst electronic sorting lets you manage output more easily.

Duplex printing

- Reduce paper consumption and day-to-day operational costs by utilizing duplex printing, copying and double sided fax reception.



80-sheet automatic document feeder & A4-size platen glass

- Enables copying, faxing or scanning of large jobs without having to separate them into multiple sets.
- A4-size platen glass enables the copying, faxing or scanning of documents that cannot be scanned by the document feeder.

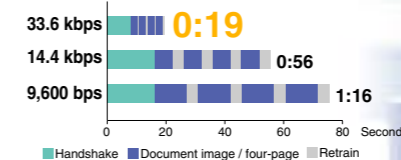


Intuitive control panel

- The simple, two-line LCD provides clear direction and operational guidance while the seven program keys allow for effortless, one-touch initiation of complex fax/copy commands.

33.6 Kbps modem

- High-speed modem transfers data at speeds up to 2 seconds per page.



200 location address book

- Store frequently dialed fax numbers for instant recall.

Quick memory transmission

- Starts sending fax as soon as scanning begins.
- Scanned documents are also held in memory when line is busy.

Broadcasting and group dialling

- Send documents to multiple parties at the touch of a button.

Energy Star compliant

- Energy Save Mode reduces energy consumption to a minimum, prolonging the machine life and reducing electricity bills.



Network connectivity

The MFX-1930D and 1330D will also perform as a network printer. Just add the optional Network Interface Card (NP-400), and you can print black and white documents via your network from Windows 98SE, NT4, 2000, ME, XP or 2003. You can also send hardcopy documents to remote Internet fax terminals or e-mail addresses.

Hi-yield consumables plus high durability

Not only are Muratec's EasyChange™ front-loading toner and drums simple to replace, avoiding the need for a service call or excessive staff time. But at 16,000 and 30,000 pages respectively, you are sure to get outstanding value long before they need to be changed. And the economies don't stop there. Long service intervals, a low breakdown rate, plus a 300,000 print design life adds up to a total cost of ownership with minimal impact on your bottom line.